

QUICK GUIDE

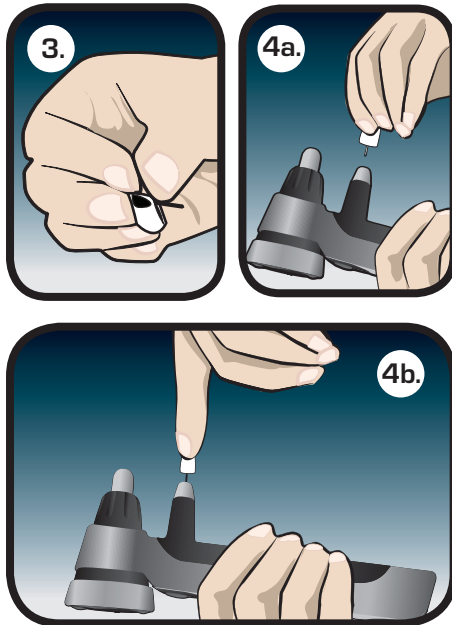
ENGLISH

icare
PRO



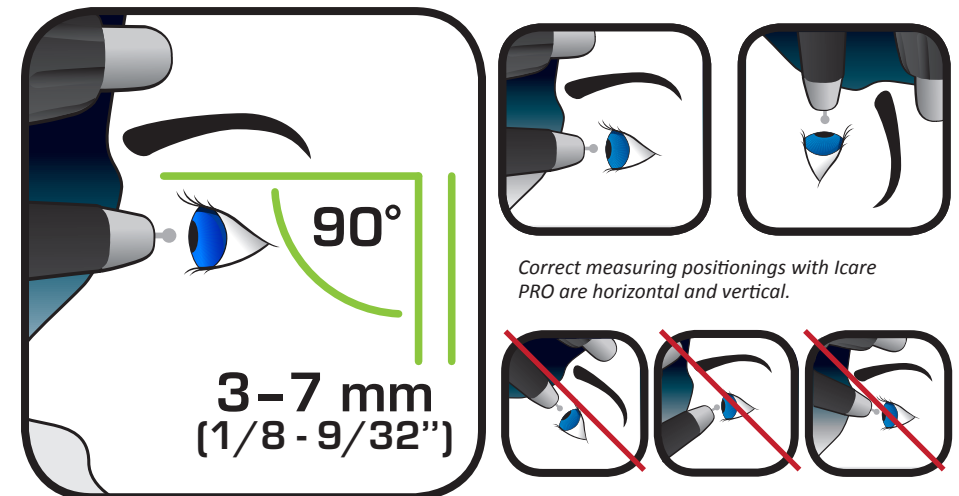
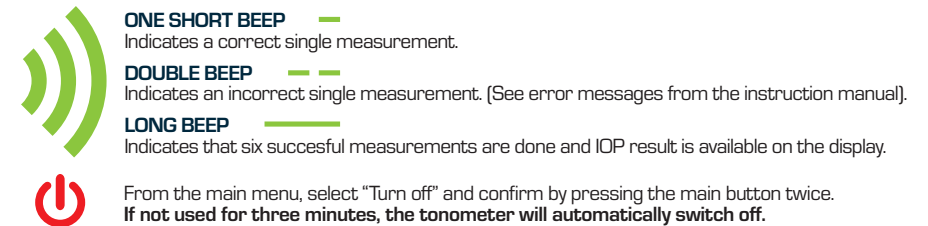
TURNING THE TONOMETER ON AND LOADING THE PROBE

1. Press the main button.
2. Go to Measure and press the main button.
3. Partially open the probe package.
4. Insert the probe into the tonometer from partially opened package without touching the probe (4a).
Lightly press (4b) the probe into the probe base to lock the probe.
Be careful not to bend the probe.
5. Press the main button once to activate the inserted probe.

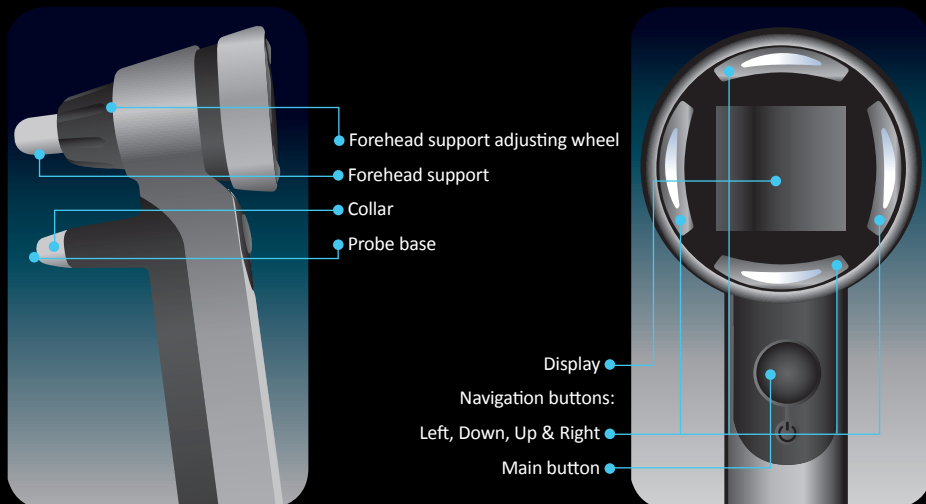


MEASUREMENT

1. Select the eye you want to measure using the left and right navigation buttons.
2. Bring the tonometer near the patient's eye. ****Note:** the angle must be 90° in both horizontal and vertical measurement. ******
3. The distance from the tip of the probe to the cornea must be 3-7mm (1/8 - 9/32 inch). If necessary, adjust the distance using the forehead support.
4. Press the main button lightly to perform one individual measurement, taking care not to shake the tonometer. The tip of the probe should make contact with the central cornea.
5. Make six single measurements. Once the six measurements are complete, the final IOP is displayed. Save the measurement result by pressing the main button after results!



PARTS OF THE TONOMETER



CHANGE/CLEAN THE PROBE BASE REGULARLY TO AVOID UNNECESSARY SERVICE.

CLEANING THE PROBE BASE

The probe base can be reused after careful cleaning. Make sure that the probe base is completely dry before using it.

1. Unscrew the probe base collar and carefully remove the probe base from the tonometer.
2. Invert the probe base over a container filled with 70-100% isopropyl alcohol solution, allowing the probe base to drop into the container and let soak for 5 - 30 minutes.
3. Dry the probe base by blowing some compressed air into it.
4. Carefully reinsert the completely dry probe base, screw the collar back into the tonometer.

Please refer to the manual for more detailed instructions of changing and cleaning the probe base.

